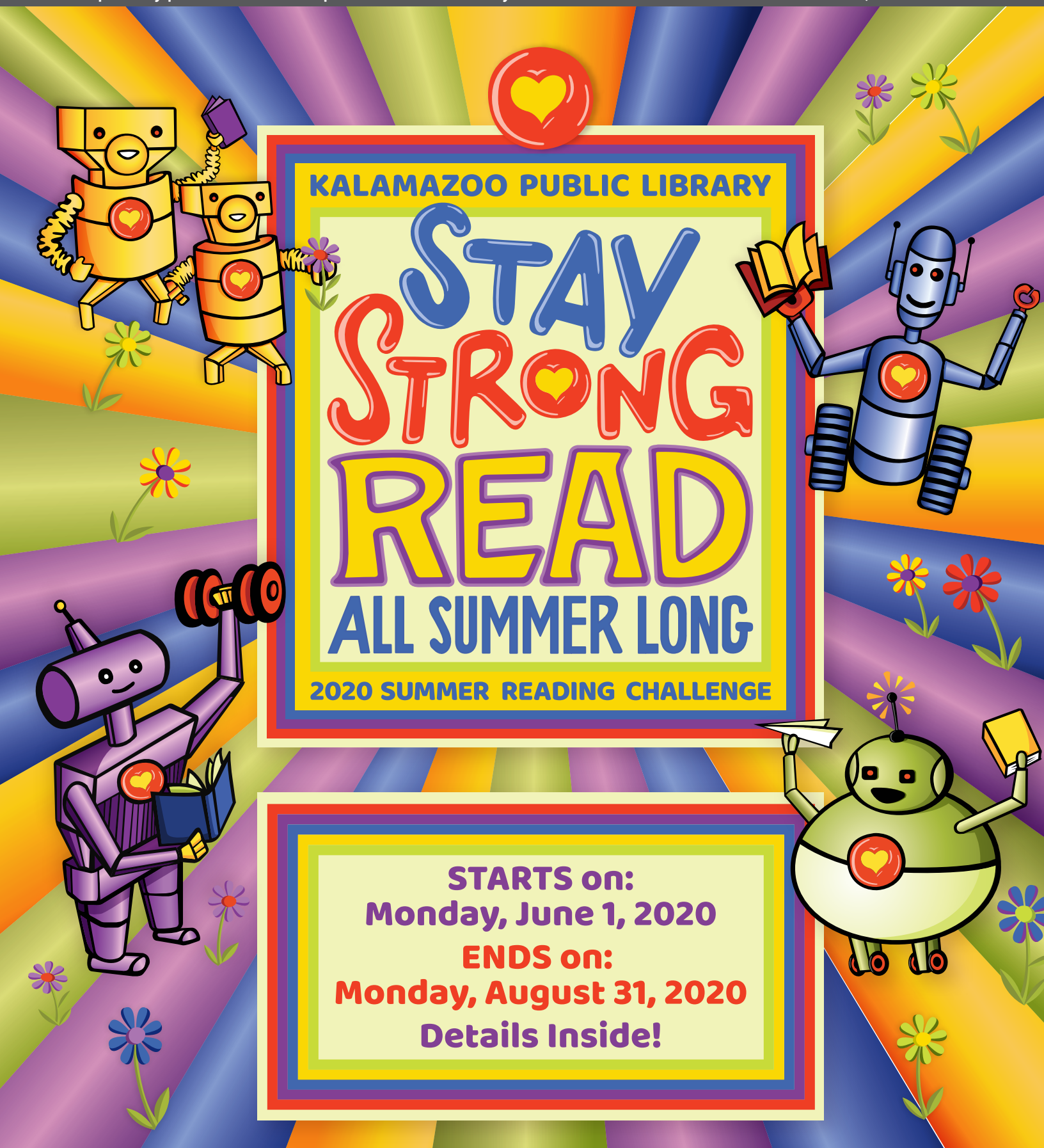




PRISM

A FREE quarterly publication for KPL patrons and community members.

JUNE, JULY & AUG 2020



KALAMAZOO PUBLIC LIBRARY

STAY STRONG READ ALL SUMMER LONG

2020 SUMMER READING CHALLENGE

STARTS on:
Monday, June 1, 2020
ENDS on:
Monday, August 31, 2020
Details Inside!

IN THIS ISSUE:

KPL Mobile Library	2
Ask a Librarian.	2
Online KPL Card Sign-up	3
KPL TV	3
SRC 2020	4-5
Virtual Programming	6-7
Director's Note.	8

KPL Programs

In order to keep our community and our staff safe, KPL will not be hosting any in-person programming until further notice. All KPL programming will be hosted virtually on our website at kpl.gov/events. Any updates regarding the return of in-person programming will be posted on kpl.gov.

Upcoming Virtual Programming

The programs listed beginning on page 6 will be hosted online. Please register at kpl.gov to receive the meeting invitation, login, and password.

Dates and times are subject to change.

KPL Location Info

CEN	553-7800
Central Library 315 S. Rose St.	
EAS	553-7810
Eastwood Branch Library 1112 Gayle Ave.	
OSH	553-7980
Oshemo Branch Library 7265 W. Main St.	
POW	553-7960
Alma Powell Branch Library 1000 W. Paterson St.	
WSQ	553-7970
Washington Square Branch Library 1244 Portage St.	

NEW Services

Coming this July: The KPL Mobile Library



Hitting the road later this summer, KPL will provide library services to patrons residing in underserved communities within our service district via the KPL Mobile Library. The KPL Mobile Library will provide the communities we visit with:

- A **rotating collection** of books, movies and music for patrons of all ages
- **Access to technology**, and professional instruction on how to use it
- **Pop-up programs**
- **Free Wi-Fi access** during our visit ▲

KPL ViaMail

The Kalamazoo Public Library offers a FREE Books By Mail Program to those who are homebound due to illness, disability, or old age. This service is available for resident card holders only. The ViaMail service provides participants with:

- Access to KPL collections from your home.
- Delivery to your door or mailbox.
- Easy, postage-free return.

Interested in this service for yourself or someone you care for? Call the Via Mail Coordinator at (269) 553-7993 or check our website at kpl.gov/viamail. ▲

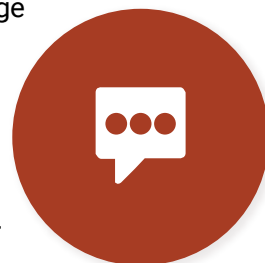
Do you have questions about your account, how to navigate our website or need recommendations for something to read, listen to, or watch?

**Ask
a
Librarian**

Ask a Librarian service is available:

Chat live with a KPL Librarian via Ask a Librarian!

To chat with an online KPL Librarian, go to the homepage of our website at kpl.gov. In the lower left-hand corner, you will see a red circle with a white chat bubble icon. Click that, enter your question into the message box and click enter and you will be connected to a KPL Librarian. Please note the chat feature is only available during the hours listed below. You will not see the chat icon on our website during off-hours. ▲



Monday–Wednesday
9 am–9 pm

Thursday– Friday
9 am–6 pm

Saturday
9 am–5 pm



Online KPL Card Sign-Up

If you don't currently have a Kalamazoo Public Library Card, you can now apply for one online at kpl.gov/get-a-card. Once your registration is processed, you will be emailed a temporary library card and pin which you may use to immediately access our digital collection and online services. Please note it may take up to 24 hours to process your request as responding KPL staff are working remotely to serve the community.

Your temporary KPL Card is good for 90 days from the date of sign-up. Once the library reopens, simply stop by your local branch to verify your residency and your account will be extended for 3 years with continued full access to all print and digital materials and databases. ▲

New Library Service for Additional Areas of Texas Township

In January 2020, Kalamazoo Public Library and Texas Township agreed to a 2-year service contract (July 1, 2020–June 30, 2022) to provide library services to Texas Township residents who live in the Mattawan and Schoolcraft school districts.

Due to the coronavirus and Governor Whitmer's subsequent Stay Home, Stay Safe executive order, KPL opened registration early on April 13, 2020, for qualifying Texas Township residents via online KPL Card Sign-up.

Texas Township residents of Mattawan and Schoolcraft school districts can submit an application at kpl.gov/get-a-card to receive a full-service library card providing them access to KPL's digital collection and services. This card will be valid for 90 days. Once the library reopens, stop by your local branch to verify your residency and your account will be extended until June 30, 2022. ▲

KPL TV

What are you watching these days, Hulu? Netflix? KPL TV?



Wait, what? You haven't heard of KPL TV?

Then you are missing out on local history presentations, concerts, author visits and more! Tune in at kpl.gov/videos and you can browse videos of past KPL programs by category or tags. Grab the popcorn, the fam and enjoy your favorite library programs at home with KPL TV! ▲

Online Learning

COMING SOON: [LYNDA.COM](https://www.lynda.com)

Are you looking for more opportunities to expand your skills or develop new ones through online learning? KPL currently offers Digital Learn (kpl.digitallearn.org) which provides easy video tutorials for users who are new to a computer and the Internet. Coming mid-June, we are excited to be able to offer Lynda.com, a leading online learning platform that helps anyone learn business, software, technology and creative skills to achieve personal and professional goals. More details coming soon at kpl.gov! ▲

OnePlace@KPL is offering a series of webinars, virtual peer learning groups and online videos including sessions on grant writing, equity, sustainability, and more!

Visit kpl.gov/venue/oneplacekpl-webinar/ for a list of upcoming virtual programs. ▲



Friends of the Kalamazoo Public Library are unable to accept used book donations until further notice. Please visit kpl.gov/friends for service updates. ▲

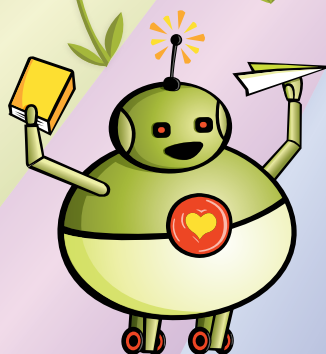
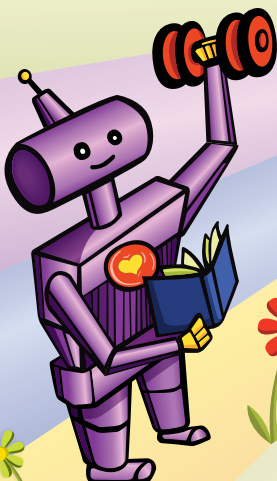


**Challenge Starts
June 1st, 2020.**

Log your first
day of reading
here.

**Challenge Ends
August 31st, 2020.**

Go to the **START!** badge,
and start reading!
Follow the numbered
path of books as you log
your daily reading, claiming
your reward at each 15-day
milestone.



See backside
for more details
about prizes and
ways to connect
with KPL online.



KPL 2020 SUMMER READING CHALLENGE — GAME DETAILS

STAY STRONG, READ ALL SUMMER LONG

The pandemic has challenged our community in ways we have never experienced before. Our youth have been particularly affected by school closures, online learning and the loss of their normal social routines. This year's Summer Reading Challenge encourages our youth to *Stay Strong, Read All Summer Long* and escape from the stress and fear into the pages of a great book.

Children birth through Grade 12 are challenged to read or listen to books for at least 20 minutes a day and record your reading on your gameboard (included in this issue of PRISM!) or online at kpl.beanstack.org.

READING REWARDS

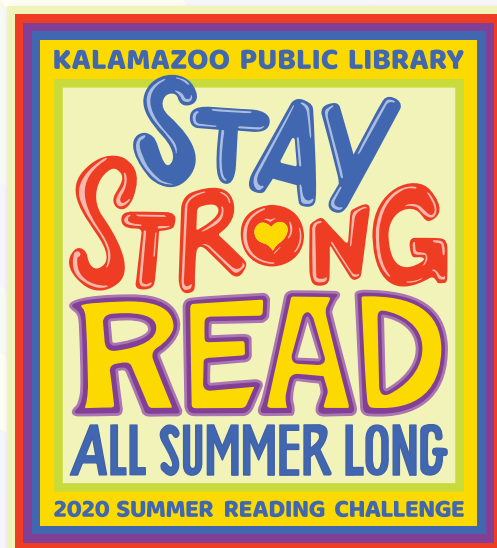
When you have completed 15 days (they do not need to be consecutive) bring your gameboard to the library for a reward or let the library staff know you have earned a reward online.

There are 92 possible reading days from Monday, June 1 through the challenge's end on Monday, August 31. You may complete four, 15-day reading segments within those 92 days, so you can earn up to four rewards!

CLAIM YOUR REWARD

- Receive a free book reward when you log **15**, **30**, and **45** days of reading (3 books total!)
- Log 60 days of reading — CONGRATULATIONS! You completed the challenge and earned this awesome *Stay Strong, Read All Summer Long* water bottle!

Sign up beginning June 1 online at kpl.beanstack.org or use the gameboard provided here. Rewards can be redeemed once KPL locations reopen to the public until no later than **Wednesday, September 30**. More information available at kpl.gov/summer.



EARN BADGES!



kpl.gov/summer

KPL's Summer Reading Challenge is sponsored by the Friends of Kalamazoo Public Library.

Central (CEN)
315 S. Rose St.
(269) 553-7804

Eastwood (EAS)
1112 Gayle Ave.
(269) 553-7810

Powell (POW)
1000 W. Patterson St.
(269) 553-7960

Oshtemo (OSH)
7265 W. Main St.
(269) 553-7980

Washington Square (WSQ)
1244 Portage St.
(269) 553-7970

Virtual Programs for ADULTS & ALL AGES



Page Turners Book Club

**Mondays, June 1 & July 6
6:30 pm | Online**

Engage in a thought-provoking conversation about books, exchange perspectives, and get to know your neighbors virtually! **Please register** so we can contact you with information on when and how to connect online. **R**

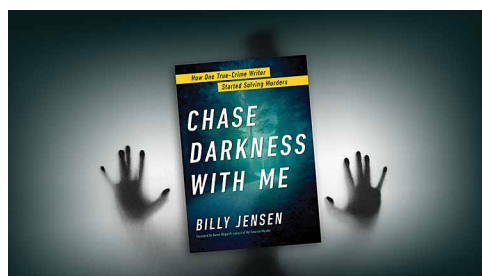
In June, we will discuss *Professor Chandra Follows His Bliss* by Rajeev Balasubramanyam.

In July, we will discuss *The Lido* (also called *Mornings with Rosemary*) by Libby Page.



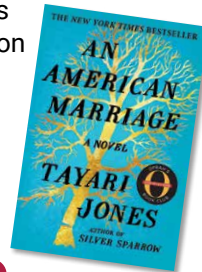
Animal Crossings with KPL Staff
**Wednesdays, June 3–August 26
4 pm | Online**

ALL AGES



**It's Crime We Talk:
A True Crime Book Club**
Tuesday, June 9 | 6:30–7:30 pm | Online
Have you watched every episode of *Forensic Files*, or listened to every episode of *Serial* or *My Favorite Murder*? Then join your fellow true crime enthusiasts and murderinos for this true crime book club where we'll talk about our favorite books, television series, and podcasts of the genre. Join us virtually for a discussion of Billy Jensen's memoir *Chase Darkness with Me: How One True-Crime Writer Started Solving Murders*. **Registration required.**

Reading Race Book Group
Tuesday, July 14 | 6:30–8 pm | Online
This book group, co-sponsored by the Society for History and Racial Equity (SHARE) and KPL's Antiracism Transformation Team, focuses on race and racism in American society. Join us virtually for a discussion of *An American Marriage* by Tayari Jones. **Registration required. R**



INSIDE THE ARTIST'S STUDIO

ALL AGES

**Thursdays, June 4, 11, 18, 25
& July 2 | 4:30 pm | Online**

Join us Thursdays June 4–July 2 for a special online tour of a local artist's studio! Get the inside scoop on what it's like being a professional artist and watch their creation process for their medium. We'll visit with six different artists and feature a variety of amazing and beautiful work: jewelry, children's book illustrations, comics, and murals! **Please register. R**

JUNE 4: KENJJI
JUNE 11: EMILY KASTNER
JUNE 18: PAUL SIZER
JUNE 25: MEG TANG
**JULY 2: PATRICK HERSHBERGER/
BONUS SAVES**



Bored at home alone with your Nintendo Switch or Switch Lite? Are you looking for new islands to explore on *Animal Crossing: New Horizons*? KPL staff are ready to open the gates at their island airports, for one hour, to welcome all KPL patrons! There will be games, scavenger hunts, and digital freebies scattered about the islands. Visit them all! Dodo codes provided on kpl.gov one hour before program begins.



Virtual Programs for TEENS



Learn to Draw with Corinne Roberts

Thursday, August 13 | 2:30–3:30 pm | Grades 3–5

Mythical Creatures and Dragons | Zoom

4–5 pm | Grades 6–12 | Anime | Zoom

Join Corinne Roberts on Zoom for a virtual drawing lesson! The first session is best for 3rd–5th grade and focuses on mythical creatures and dragons. The second session is best for 6th–12th grade and focuses on anime. No prior drawing experience needed! **Please register.** Once registered, you will be emailed a Zoom link to join the program. **R**



Teen Social Distancing Challenge

Are you a teenager? Are you bored with doing the same thing every day? Ditch those distancing doldrums and take the Teen Social Distancing Challenge. Each day has a different challenge for the mind, body, heart, and head! Each month we will share a new set of daily challenges on our website at kpl.gov. **Designed for teens ages 11–18** but parents and siblings are welcome to join! Post results on social media and tag Kalamazoo Public Library **#kplteensocialdistancechallenge** and show us how you're doing!



Virtual Programs for CHILDREN & FAMILY



**Every Wednesday & Saturday
10:30 am | Online**

Enjoy silly stories, songs, special guests, and more with a KPL Librarian!
Perfect for kids birth–5.



Tuesday, June 2 | 7 pm | Online

The Kalamazoo Bach Festival and KPL present Bach in Jammies. Put on your PJs and hear Dede Alder's marimba magic in a very special evening program!
dedealder.com



June 9, July 14, Aug 11 | 4 pm | Online

Bookworms is back! This book club for families will have titles available on Hoopla. Check the book out there and join us for a book discussion on the second Tuesday of the month. Please register to receive the Zoom meeting invitation.

June: *Up in the Garden, Down in the Dirt* by Kate Messner

July: *Hello Universe* by Erin Entrada Kelly

Aug: *Other Words for Home* by Jasmine Warga

Upcoming Virtual Programming

The programs listed will be hosted online. Please register at kpl.gov to receive the meeting invitation, login, and password.

Dates and times are subject to change.



Note from the Director



Ryan Wieber
KPL Director

KPL is eager to resume public service as soon as we safely can do so. Like all public facing organizations our top priority is ensuring we offer a safe environment for patrons and staff, and in doing so, help

continue to lower the curve. As a place where people congregate, use computers and copiers, and handle library materials, we of course have some unique obstacles. However, before we are ready to provide any type of onsite service we will adhere to the Governor's orders, CDC and County Health recommendations, and library procedures that first and foremost keep you safe.

In doing so, we are operating under

a multi-phased reopening plan, with Step 1 being a short timeframe where the only public activity is receiving checked-out library materials from patrons via curbside walk-up and drive-up (this gives us time to collect, quarantine, and clean tens of thousands of items you have enjoyed the past few months). Step 2 will introduce curbside delivery of requested materials by way of our normal online item request method, or by telephone. Step 3 will reintroduce patrons inside buildings for reduced time periods, limited access to collections and services, and enforced social distancing standards. Step 4 is a return to a near-normal activity although this could be much further ahead on the calendar.

Cleaning protocols will include daily, rigorous cleanings and ongoing, throughout-the-day disinfecting of high-

touch surfaces, bathrooms, elevators, computers and copiers, and all returned books and dvds will be quarantined and sanitized before being reshelfed. Behind the scenes right now, plastic desk shields have been installed, all bathrooms are being upgraded to touch-free fixtures, and furnishings are being removed or relocated to adjust to social distancing requirements. All patrons will be required to wear a face covering unless medically unable, and the library will request patrons to not visit the library if exhibiting COVID-19 related symptoms or have been exposed to an infected person within 14 days. As we narrow down more details on the reopening, we will continue to keep you updated through KPL's website, social media, and local media outlets.

Stay safe Kalamazoo! ▲

Kalamazoo Public Library Reopening Plan

Reopening dates, times and available services to be announced soon.



STEP 1 CURBSIDE DROP-OFF

Return materials to your local KPL location. All materials will be quarantined for 72 hours, cleaned and processed for return. All due dates will be extended.



STEP 2 CURBSIDE PICKUP

KPL staff will process patron orders for materials and provide a safe way for patrons to pick up their selections by vehicle or walk-up.



STEP 3 LIMITED ACCESS

All KPL locations will be thoroughly cleaned and reopened with limited access to the public. Open days, hours and library services will be modified to provide a safe environment for all.



STEP 4 FULL ACCESS

All KPL locations will return to providing full access to services and programming while maintaining established procedures to ensure a clean, safe experience.

2020 LIBRARY BOARD

Lisa Godfrey *President*
Jannie Williams *Vice President*
Robert Paul Brown *Treasurer*
Cheryl TenBrink *Secretary*

Christine Kindy *Trustee*
Jennifer Moore *Trustee*
Anna M. Moss *Trustee*

CREDITS

Kalamazoo Public Library's Marketing and Communications Office publishes *PRISM* with support from the Friends of the Library. Contact us with your comments or suggestions, (269) 553-7879 or email mac@kpl.gov.



This edition of *PRISM* is printed on recycled paper.